



## LINCOLN COUNTY RESOURCE BOARD

*Putting Kids First in Lincoln County*

“And now let us welcome the new year, full of things that never were.” — Rainer Maria Rilke



### Emotional Poverty Education Takes Center Stage in Lincoln County

Three days into the New Year and Lincoln County demonstrated our resolve to Put Kids First. Nearly 70 educators, behavioral health care providers, social service agencies and community partners and leaders filled the Troy R-III Powell Conference Room for the LCRB-funded Emotional Poverty Workshops presented by educator and behavior specialist Ruben Perez.

The Emotional Poverty teachings, based on the research and book by Dr. Ruby Payne, are designed to reduce anger, anxiety and violence in the classroom by promoting the understanding of:

- The unregulated, unintegrated brain;
- The role of developmental stages for the creation of a strong inner self;
- The concept of "less than" and "separate from" and how it fuels undesirable behaviors and emotional outbursts;
- Discipline and intervention strategies proven effective for students

experiencing emotional poverty.

As featured in *Emotional Poverty Volume 1*, Gary Rudick, former chief of Tulsa Public Schools Campus Police and current member of the Oklahoma Commission on School Security, reports:

*"I've been teaching school safety and security since I was chief of Tulsa Public Schools Campus Police, and I now teach it across the country.... When we talk to kids, they tell us that the thing that makes them feel safest is not metal detectors, fences, armed guards.... It's whether or not there is a culture of belonging, of connection, of appreciation--that there is someone here who cares about whether or not I succeed, whether or not I attend school at all, whether or not I have friends there, etc."*

Preventing violence. Promoting understanding. Providing consequences built on relationship to motivate long-term change. These were the educational seeds planted to start this New Year. These are the works supported and funded by the LCRB, working alongside our community partners to keep pace with evolving needs through evidence-informed teachings and practices.

We look forward to cultivating healthier schools and communities by continuing to Put Kids First in Lincoln County.

---

### **CY 2025-26 Funding Applications: Ideas, Techniques and Outcomes**

As LCRB providers reach the seventh month of the 2024-25 contract cycle, board members are working toward the next funding period. From Finance Committee members analyzing sales tax projections and budgets to Selection & Review Committee members reviewing application drafts and gathering data, LCRB eyes are focused on our kids their health and futures.



The LCRB will post funding applications for the CY 2025-26 by Jan. 31, 2025, to the [LCRB website](#). To guide the funding allocation decisions, LCRB members have scheduled a strategic planning session and the 2024-25 school-based assessment to be issued next month.

The LCRB will work to allocate funding for CY 2025-26 cycle by April.

---

### **C.A.N. Plan: Working to Prevent Abuse; Protect Our Kids**

As Dr. Cynthia Berry finalizes The C.A.N. (Child Abuse & Neglect) Plan "Key Findings" report, the LCRB has promoted our initiative and local data with our

state leaders--from elected officials to coalition leaders. Currently, Dr. Berry has prepared a survey for Lincoln County mandated reporters to better understand the welfare concerns warranting hotline calls to help guide LCRB funding allocations as well as C.A.N. Plan recommendations.

With months dedicated to acquiring and analyzing local data from our multi-disciplinary team, there is no statistic or report that can adequately capture the degree of child abuse found in Lincoln County than the news that broke in the December 20 *Lincoln County Journal* article "Murder--Times Six."

Seven-week-old Lincoln County baby Ty' Ann died after exposure to methamphetamine and fentanyl, along with suffering physical abuse. Prosecuting Attorney Mike Wood said the home where the child was living had fentanyl in every room and was part of a drug operation. Recent reports from the Missouri Department of Social Services show infant deaths due to fentanyl are up 500%.

In addition to lethal drug exposure, the seven-week-old baby had multiple wounds indicating prior history of physical abuse, according to the coroner's report, specifically broken ribs and brain bleeds.

In an interview with KTVI-TV, Lincoln County Sheriff Rick Harrell reported: "Nearly 1,000 Lincoln County kids are at risk," based on the number of residents with history of narcotics involvement.

The LCRB continues to call upon our multi-disciplinary team to partner and collaborate to Put Kids First in Lincoln County. May our collective efforts ensure that Ty' Ann's short life shattered by abuse is never again experienced. Never again the ending of an innocent child's life. Never again.

**Follow our efforts via Facebook on the Justice for Kids Lincoln County page.**



## **C.A.N. PLAN RECOMMENDATIONS**

### **1 Education & Prevention**

- Enhance awareness and increase referrals of LCRB-funded providers and programs--strengthening the family unit; improving parenting skills; ensuring wellbeing of children
- Motivate caregiver(s) participation and engagement
- Prioritize families with history of CD



involvement; multiple, verified hotlines; and low compliance

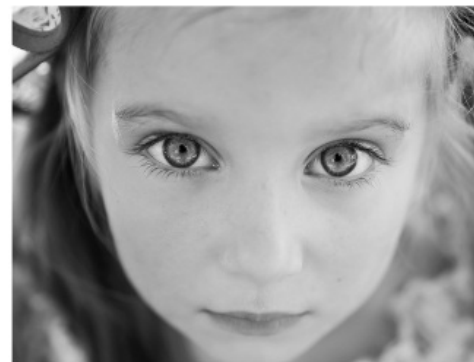


## 2 Assess Baseline Physical and Mental Health of Children

- Integrate trauma-informed therapy/assessments and pediatric evaluations following forensic interviews where disclosures are made
- Establish baseline of child's mental and physical health status
- Promote data-driven, child-first considerations with regard to welfare and alternative placement

## 3 Child/Family Stabilization & Reunification

- Empower our children
- Amplify child's voice and readiness through trauma-informed therapist recommendations, complementing GAL role
- Embed therapeutic supports for child and caregivers
- Reduce trauma and strengthen family unit



## 4 Follow-up Care

- Require, as part of the reunification process, ongoing therapeutic care for child and family, e.g., family counseling
- Continue to evaluate health of child in relation to baseline assessments and incorporate additional interventions as needed
- Provide therapeutic supports for a minimum of 6 months, or until therapeutic provider recommends case closure

### Care Objectives:

- Prevent future incidents of abuse
- Strengthen family unit
- Address and minimize neglect, a significant Lincoln County issue

### Putting Kids First

Break the Cycle of Abuse

Prioritize the Needs of Every Child



## LCRB in the Community

Mother Nature couldn't keep the LCRB from engaging with parents and district leadership at the **Elsberry School District Parents Summit** or the **Troy Area Chamber of Commerce Leadership Troy "Quality of Life and Health Care"** session. The LCRB's January community outreach efforts provided platforms to enhance the education and awareness of mental and behavioral health; the role the LCRB plays in improving our kids' health and quality of life; and showcasing our incredible funded providers and the evidence-informed programs and services they provide to Lincoln County kids in their schools, homes and communities.

Special thanks to our participating providers: Compass Health Network; F.A.C.T.; Saint Louis Crisis Nursery; Saint Louis Counseling; and CHADS Coalition.



## LCRB Meetings

The January meeting will be held tomorrow **Wed., Jan. 22**

beginning at 8:30 a.m. at the [Cuivre River Electric Cooperative \(Troy\) Community Room](#). We will also offer a Zoom option for virtual attendance. LCRB monthly meetings are open to the public.

Visit our [website and its meetings page](#) for more information and instructions.



LINCOLN COUNTY RESOURCE BOARD | [Website](#)



Lincoln County Resource Board | 101 West College Street Suite 5 | Troy, MO 63379 US

[Unsubscribe](#) | [Update Profile](#) | [Constant Contact Data Notice](#)



Try email marketing for free today!